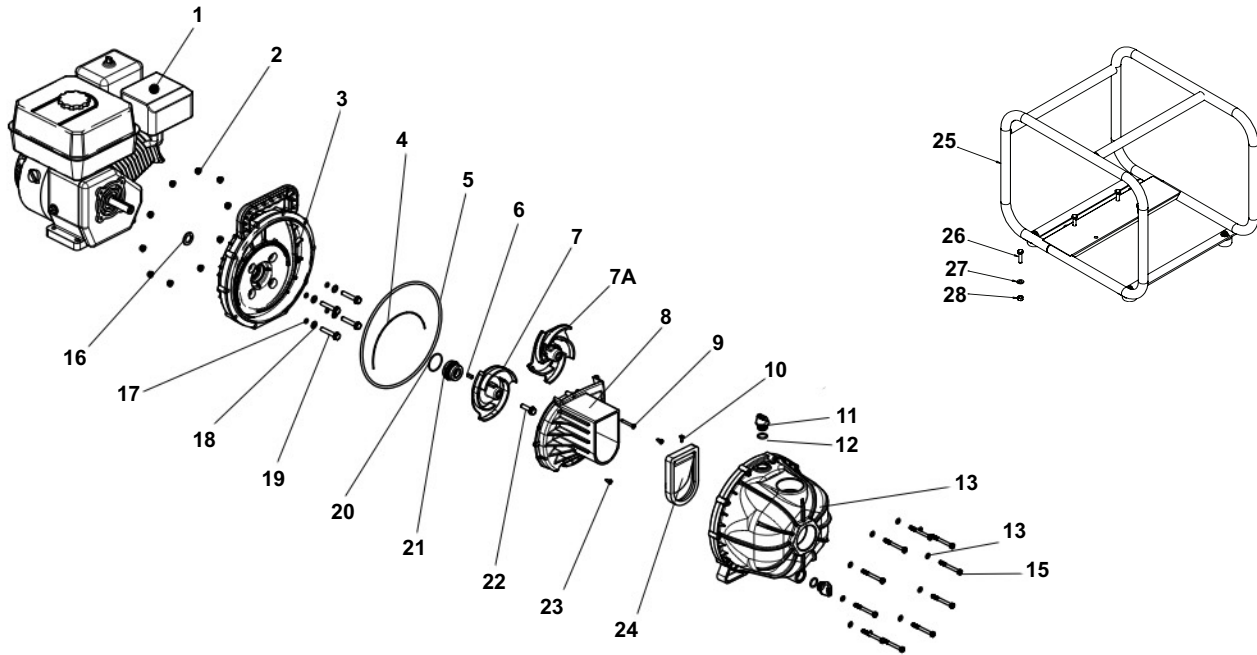


1542P-55SP, 1542P-65SP, 1542P-65SPM Gasoline Engine-Driven Plastic Transfer Pump



Std. EPDM Seal Repair Kit 3430-0635 contains:

(1) Ref. 4 Diffuser Gasket, (1) Ref. 5 Pump Body O-Ring, (1) Ref. 20 Seal O-Ring, (1) Ref. 21 Mechanical Seal, and (4) Ref. 17 O-Ring.

Viton Seal Repair Kit 3430-0659 contains:

(1) Ref. 4 Diffuser Gasket, (1) Ref. 5 Pump Body O-Ring, (1) Ref. 24 Flapper Valve, (1) Ref. 20 Seal O-Ring, (1) Ref. 21 Mechanical Seal, and (4) Ref. 17 O-Ring.

Pump Head Kit 3430-0690 (1542P-55SP)
Includes all items less 1, 1A and 7A.

Pump Head Kit 3430-0691 (1542P-65SP, 1542P-65SPM) Includes all items less 1, 1A and 7.

NOTE: When ordering parts, give QUANTITY, PART NUMBER, DESCRIPTION, and COMPLETE PUMP MODEL NUMBER. Reference numbers are used ONLY to identify parts in the drawing and are NOT to be used as order numbers.

Ref#	Torque Spec.
#19	10 ft·lbs. / 1.1 Nm
#22	10 ft·lbs. / 1.1 Nm
#15	45 in·lbs. / 5.1 Nm

Ref. No.	Qty. Req'd.	Part Number	Description
1	1	2543-0043	5.5 HP Gas Engine (1542P-55SP)
1A	1	2543-0045	6.5 HP Gas Engine (1542P-65SP)
2	10	2250-0087	Hex Flange Nut, M6
3	1	0751-1540P	Mounting Flange
4	1	1700-0209	Diffuser Gasket
5	1	1720-0244	Pump Body O-ring
6	1	1610-0044	Key
7	1	0400-1540P	3-vane Impeller (1542P-55SP)
7A	1	0401-1540P	5-vane Impeller (1542P-65SP)
8	1	0150-1540P	Diffuser
9	1	2210-0144	Screw
10	1	2210-0152	Screw
11	2	2404-0350P	Fill/Drain Plug
12	2	1720-0230	O-Ring (EPDM)
13	1	0100-1540P	Pump Housing

Ref. No.	Qty. Req'd.	Part Number	Description
14	10	2270-0115	Flat Washer
15	10	2210-0141	Hex Head Cap Screw
16	1	1410-0083	Slinger Ring
17	4	1720-0013	O-ring
18	4	2270-0114	Flat Washer
19	4	2210-0153	Hex Head Cap Screw w/Washer
20	1	1720-0231	O-ring (EPDM)
21	1	2120-0044	Mechanical Seal
22	1	2210-0142	Hex Head Cap Screw
23	2	2210-0145	Screw, Phillips, SS
24	1	1700-0208	Flapper Valve (EPDM)
25	1	2801-0012	Frame
26	4	2210-0021	Bolt
27	4	2270-0112	Washer
28	4	2250-0008	Hex Nut